

**Student Satisfaction Survey Report 2020-21**

Student Satisfaction Survey (SSS) is one of the mandatory criteria set by National Assessment and Accreditation Council (NAAC).

To impart quality education student will have to respond to all the questions with her/his sincere effort. Each question has five responses, choose the most appropriate one.

The feedback collected from students is definitely useful for strengthening the services offered to students.

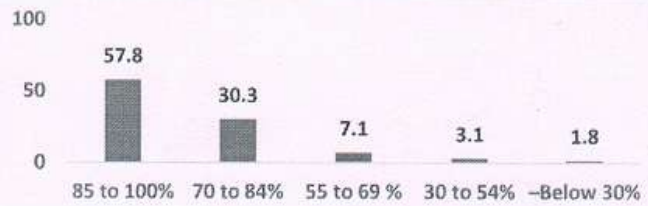
Analysis and the findings: The responses collected from students through google form, the question-wise outcome of the results is presented below,

A) Please confirm this is the first and only time you answer this survey.			
Options	No. of Respondent	% of Respondent	
Yes	485	95.3	
No	24	4.7	
<b>Total</b>	<b>509</b>		
B) Gender of Respondent			
Gender of Respondent	No. of Respondent	% of Respondent	
Male	168	33	
Female	341	67	
<b>Total</b>	<b>509</b>		
C) What subject area are you currently pursuing?			
Gender of Respondent	No. of Respondent	% of Respondent	
Arts	184	36.1	
Commerce	103	20.2	
Science	222	43.6	
<b>Total</b>	<b>509</b>		



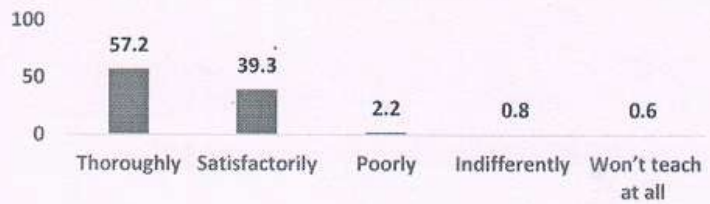
**1. How much of the syllabus was covered in the class?**

Options	No. of Respondent	% of Respondent
85 to 100%	294	57.8
70 to 84%	154	30.3
55 to 69 %	36	7.1
30 to 54%	16	3.1
-Below 30%	09	1.8



**2. How well did the teachers prepare for the classes?**

Options	No. of Respondent	% of Respondent
Thoroughly	291	57.2
Satisfactorily	200	39.3
Poorly	11	2.2
Indifferently	04	0.8
Won't teach at all	03	0.6



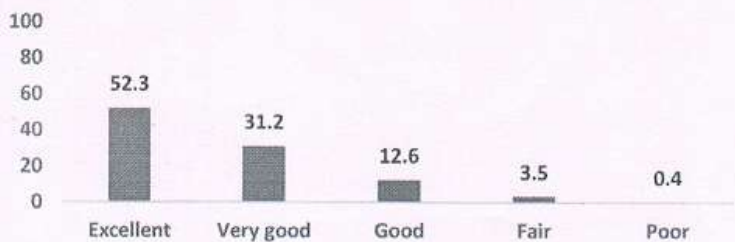
**3. How well were the teachers able to communicate?**

Options	No. of Respondent	% of Respondent
Always effective	450	88.4
Sometimes effective	32	6.3
Just satisfactorily	19	3.7
Generally ineffective	08	1.6
Very poor communication	0	0



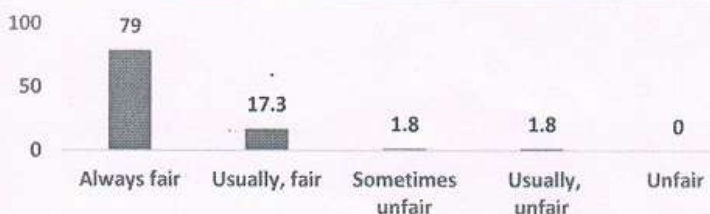
**4. The teacher's approach to teaching can best be described as,**

Options	No. of Respondent	% of Respondent
Excellent	266	52.3
Very good	159	31.2
Good	64	12.6
Fair	18	3.5
Poor	02	0.4



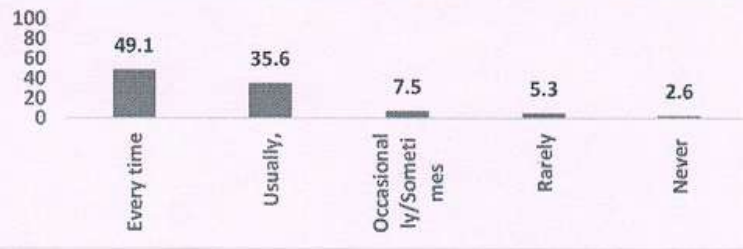
**5. Fairness of the internal evaluation process by the teachers.**

Options	No. of Respondent	% of Respondent
Always fair	402	79
Usually, fair	88	17.3
Sometimes unfair	09	1.8
Usually, unfair	09	1.8
Unfair	0	0



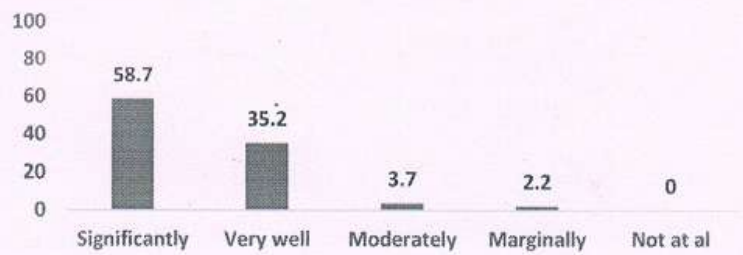
**6. Was your performance in assignments discussed with you?**

Options	No. of Respondent	% of Respondent
Every time	250	49.1
Usually,	181	35.6
Occasionally/ Sometimes	38	7.5
Rarely	27	5.3
Never	13	2.6



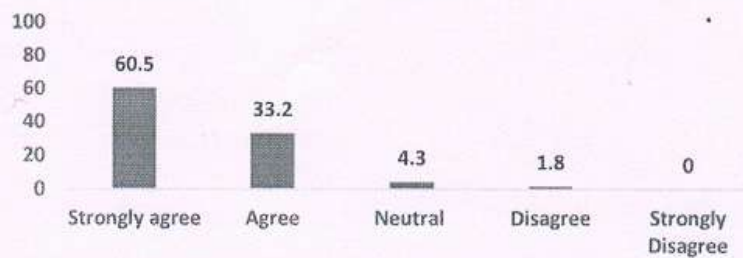
**7. The teaching process in your institution facilitates you in cognitive, social and emotional growth.**

Options	No. of Respondent	% of Respondent
Significantly	299	58.7
Very well	179	35.2
Moderately	19	3.7
Marginally	11	2.2
Not at all	0	0



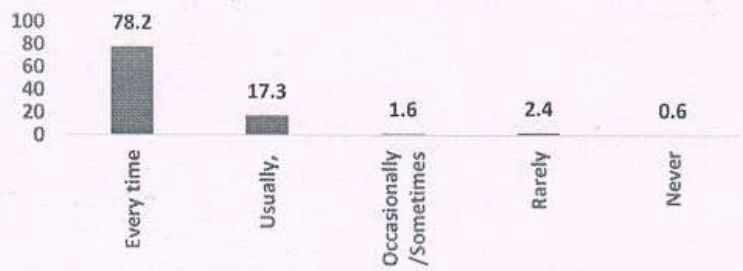
**8. The institution provides multiple opportunities to learn and grow.**

Options	No. of Respondent	% of Respondent
Strongly agree	308	60.5
Agree	169	33.2
Neutral	22	4.3
Disagree	09	1.8
Strongly Disagree	0	0



**9. Teachers inform you about your expected competencies, course outcomes and programme outcomes.**

Options	No. of Respondent	% of Respondent
Every time	398	78.2
Usually,	88	17.3
Occasionally/ Sometimes	08	1.6
Rarely	12	2.4
Never	03	0.6



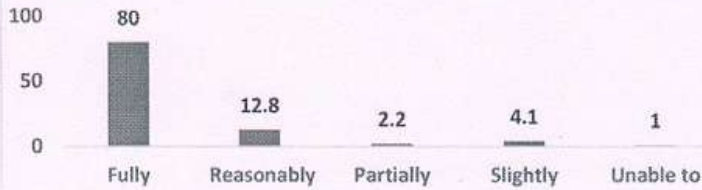
**10. The teachers illustrate the concepts through examples and applications.**

Options	No. of Respondent	% of Respondent
Every time	361	70.9
Usually,	101	19.8
Occasionally/ Sometimes	18	3.5
Rarely	24	4.7
Never	05	1



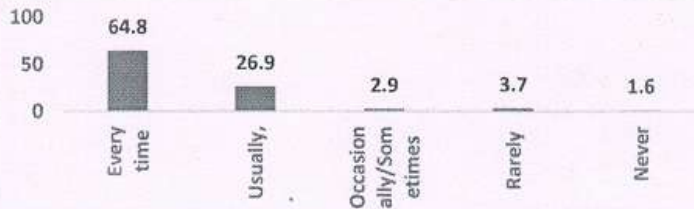
**11. The teachers identify your strengths and encourage you with providing right level of challenges.**

Options	No. of Respondent	% of Respondent
Fully	407	80
Reasonably	65	12.8
Partially	11	2.2
Slightly	21	4.1
Unable to	05	1



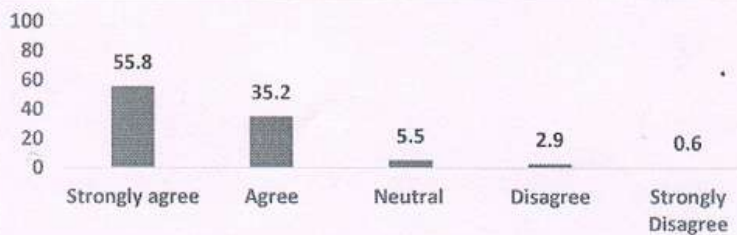
**12. Teachers are able to identify your weaknesses and help you to overcome them.**

Options	No. of Respondent	% of Respondent
Every time	330	64.8
Usually,	137	26.9
Occasionally / Sometimes	15	2.9
Rarely	19	3.7
Never	8	1.6



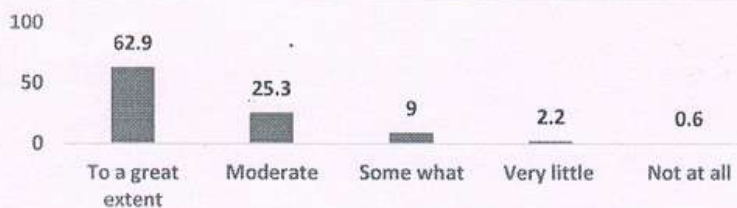
**13. The institution makes effort to engage students in the monitoring, review and continuous quality improvement of the teaching learning process.**

Options	No. of Respondent	% of Respondent
Strongly agree	284	55.8
Agree	179	35.2
Neutral	28	5.5
Disagree	15	2.9
Strongly Disagree	03	0.6



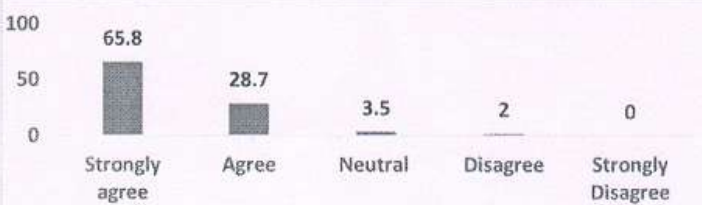
**14. The institute/ teachers use student centric methods, such as experiential learning, participative learning and problem-solving methodologies for enhancing learning experiences.**

Options	No. of Respondent	% of Respondent
To a great extent	320	62.9
Moderate	129	25.3
Some what	46	9
Very little	11	2.2
Not at all	03	0.6



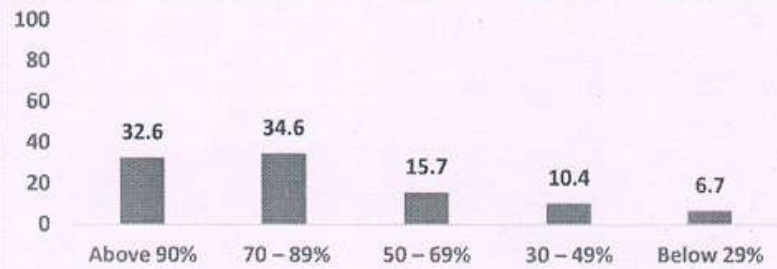
**15. Teachers encourage you to participate in extracurricular activities.**

Options	No. of Respondent	% of Respondent
Strongly agree	335	65.8
Agree	146	28.7
Neutral	18	3.5
Disagree	10	2
Strongly Disagree	0	0



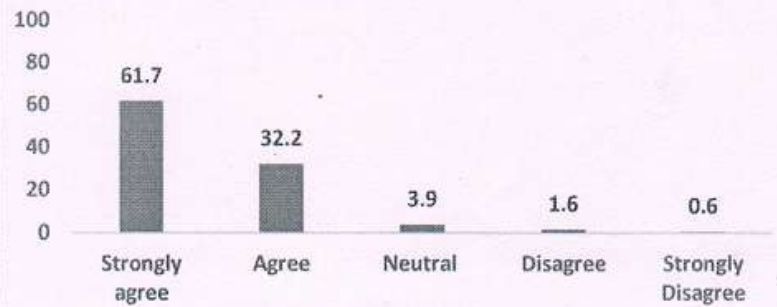
16. What percentage of teachers use ICT tools such as LCD projector, Multimedia, etc. while teaching.

Options	No. of Respondent	% of Respondent
Above 90%	166	32.6
70 – 89%	176	34.6
50 – 69%	80	15.7
30 – 49%	53	10.4
Below 29%	34	6.7



17. The overall quality of teaching-learning process in your institute is very good.

Options	No. of Respondent	% of Respondent
Strongly agree	314	61.7
Agree	164	32.2
Neutral	20	3.9
Disagree	08	1.6
Strongly Disagree	03	0.6



18. Some important suggestions are,

- Teacher staff is good and their teaching is excellent.
- Use better graphics and visual media.
- Every teacher motivates the students, support all students, every time help students.
- everything is all ok. But only 1 request Please Start the college very fast plea.
- 1) We should emphasize on practical learning. 2) transforming the education pattern by including vocational courses and professional courses. 3) more emphasis on skill-based learning and promoting entrepreneurial skills in the students.

Key Findings from the Survey,

1. Students have expressed overall satisfaction regarding the syllabus completion (85%), and communications with the students regarding the subjects (89%).
2. Teacher's preparation, communication, use of appropriate teaching and internal evaluation has been rated fair in the survey.
3. The college offers opportunities for cultural activities, sports activities and extracurricular activities (64 %).
4. The students expressed that college also provides good environment for their social and emotional growth.
5. The students expressed that the learning environment provided by our college is conducive. The SSS has also pointed out few grey areas where the college/ teachers/ departments do have scope for enhancement in quality of education. They are as follows: a) Institute needs to promote field visit opportunities. b) Enhance use of ICT in teaching. c) Active mentorship.



  
PRINCIPAL

Raver Parisar Shikshan Prasarak Mandal's  
Shri Vitthalrao Shankarrao Naik  
Arts, Commerce & Science College,  
Raver. Dist-Jalgaon (M.S.) 425508